

Mike Levine Lakelands Trail State Park

Nearly a half-century in the making, the Mike Levine Lakelands Trail State Park made another great leap toward completion in 2022 when 3.7 miles of the abandoned rail line, from the Herb Amster Trailhead to Cooper Road, was surfaced with finely screened and compacted limestone. The last quarter-mile was surfaced with asphalt running through Jackson State Prison. Oddly enough, both ends of the trail are built on State Prison (correctional facility) property. You'll see lots of "No Trespassing" signs.

One of Michigan's five "linear" state parks, the trail currently consists of nearly 39 miles of nonmotorized pathway passing through a varied landscape of woodlands, wetlands, lakes, small country towns and quaint family farms.

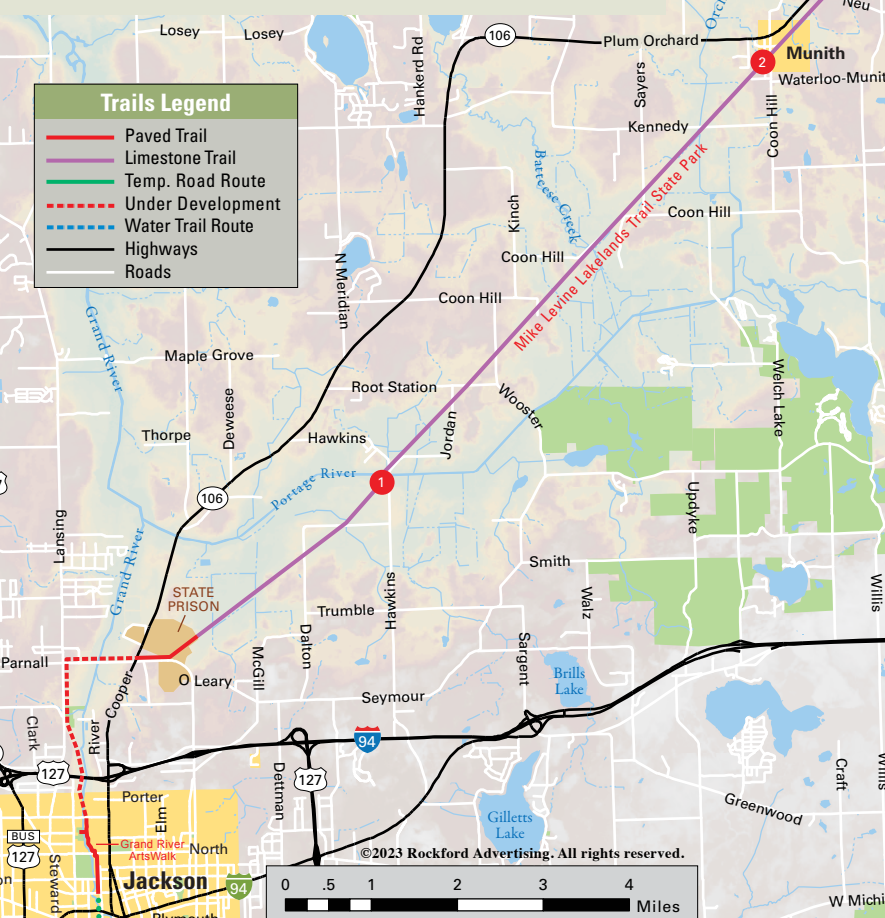
The trail includes 10 miles of asphalt pavement, with an unpaved equestrian side path, from Whitmore Lake Road (near Hamburg) to M-36 in Pinckney. The 12-mile section from Pinckney to Stockbridge is surfaced with fine limestone. Equestrian use is permitted and popular along the entire trail. Be cautious when approaching horses.

The linear state park was developed on the remnants of the original Michigan Air Line Railway, built in 1883, which ran between Port Huron and Niles. It was known as the Grand Trunk Western Railroad when the rail corridor was abandoned and acquired by MDOT in 1975.

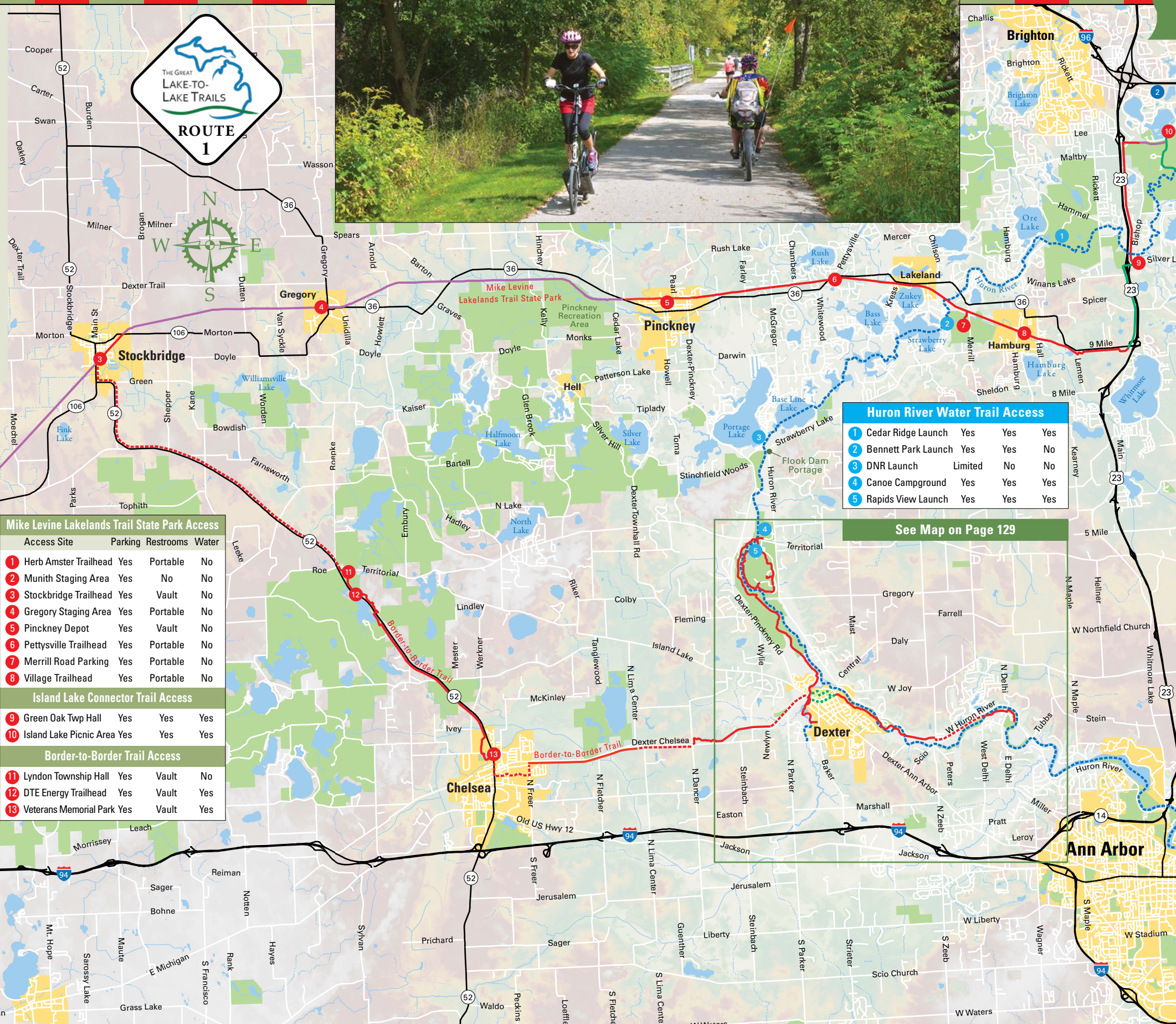
Jackson County Parks will soon begin construction on the final 2+ miles in Blackman Township connecting with the Grand River ArtsWalk in Jackson. MDOT is working on a plan to link the eastern end to the Island Lake Connector Trail.

Island Lake Connector Trail

Opened in 2019, the 4-mile Island Lake Connector Trail (also known as the Green Oak Township Trail) is the first section of trail that will someday link the Mike Levine Lakelands Trail State Park with the Island Lake Pathway. This is a critical link in the Great Lake-to-Lake Trail Route #1. A road route now connects the two trails (see green line for suggested road route on map).



Mike Levine Lakelands Trail State Park Access			
Access Site	Parking	Restrooms	Water
1 Herb Amster Trailhead	Yes	Portable	No
2 Munith Staging Area	Yes	No	No
3 Stockbridge Trailhead	Yes	Vault	No
4 Gregory Staging Area	Yes	Portable	No
5 Pinckney Depot	Yes	Vault	No
6 Pettysville Trailhead	Yes	Portable	No
7 Merrill Road Parking	Yes	Portable	No
8 Village Trailhead	Yes	Portable	No
Island Lake Connector Trail Access			
9 Green Oak Twp Hall	Yes	Yes	Yes
10 Island Lake Picnic Area	Yes	Yes	Yes
Border-to-Border Trail Access			
11 Lyndon Township Hall	Yes	Vault	No
12 DTE Energy Trailhead	Yes	Vault	Yes
13 Veterans Memorial Park	Yes	Vault	Yes



Huron River Water Trail Access			
1 Cedar Ridge Launch	Yes	Yes	Yes
2 Bennett Park Launch	Yes	Yes	No
3 DNR Launch	Limited	No	No
4 Canoe Campground	Yes	Yes	Yes
5 Rapids View Launch	Yes	Yes	Yes

See Map on Page 129

Trail is paved with asphalt from Pinckney to Whitmore Lake Road.



Mike Levine Lakelands Trail State Park • Huron River Water Trail

Mike Levine Lakelands Trail State Park • Huron River Water Trail